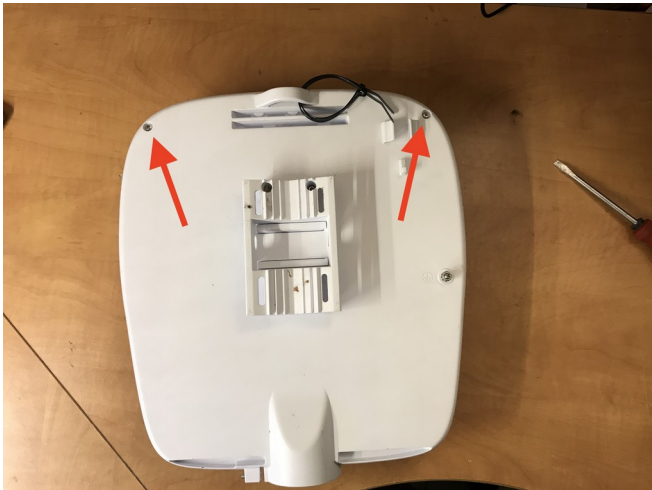


DISASSEMBLY:

Slide down cover, and remove two screws.



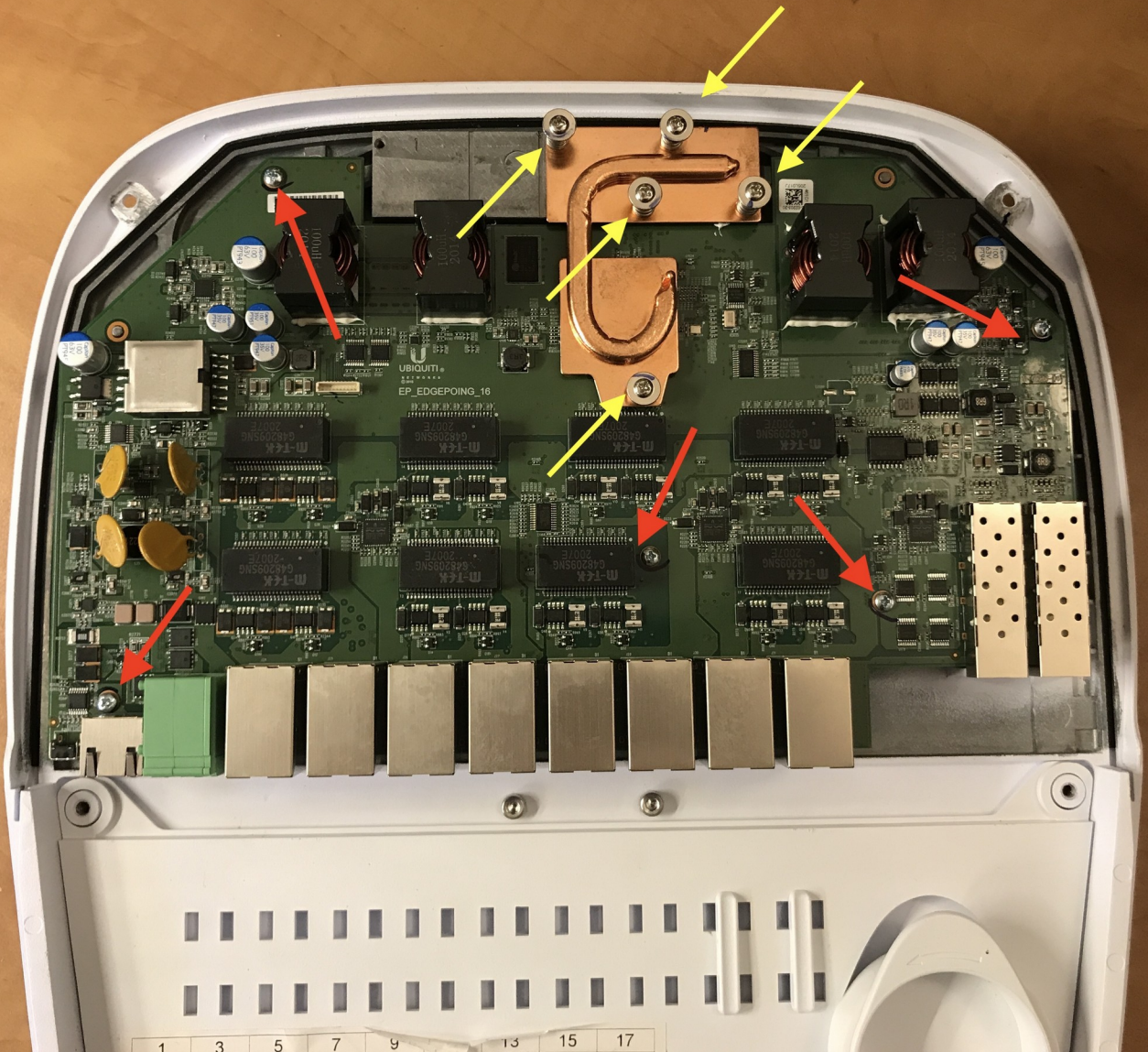
Flip over, remove the two rear screws. Flip over again, and SLOWLY tilt the cover up as shown. Look inside as you do this so you do not damage the LED cable



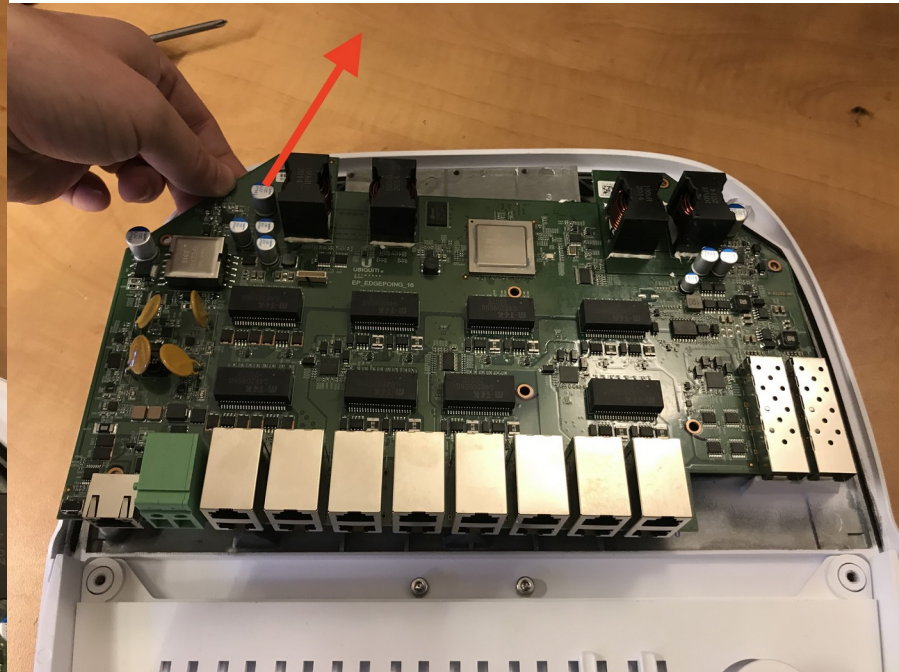
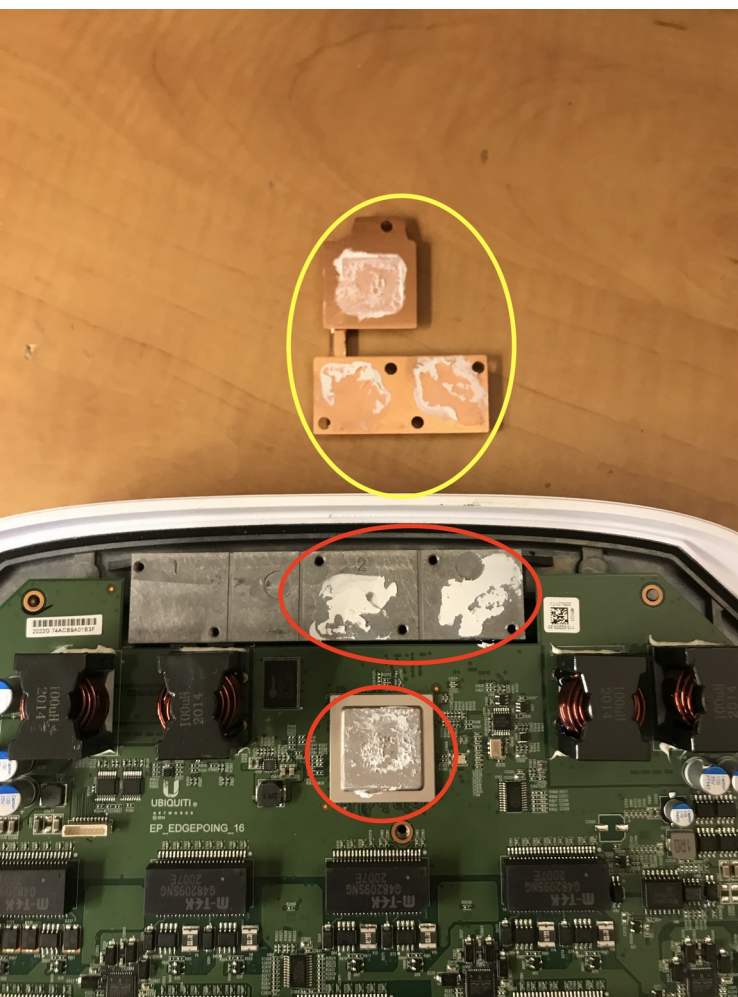
Mark the left side of the circled port with a sharpie to aid in reassembly orientation, then grabbing the black wires just above the connector, gently pull out the connector from the port.



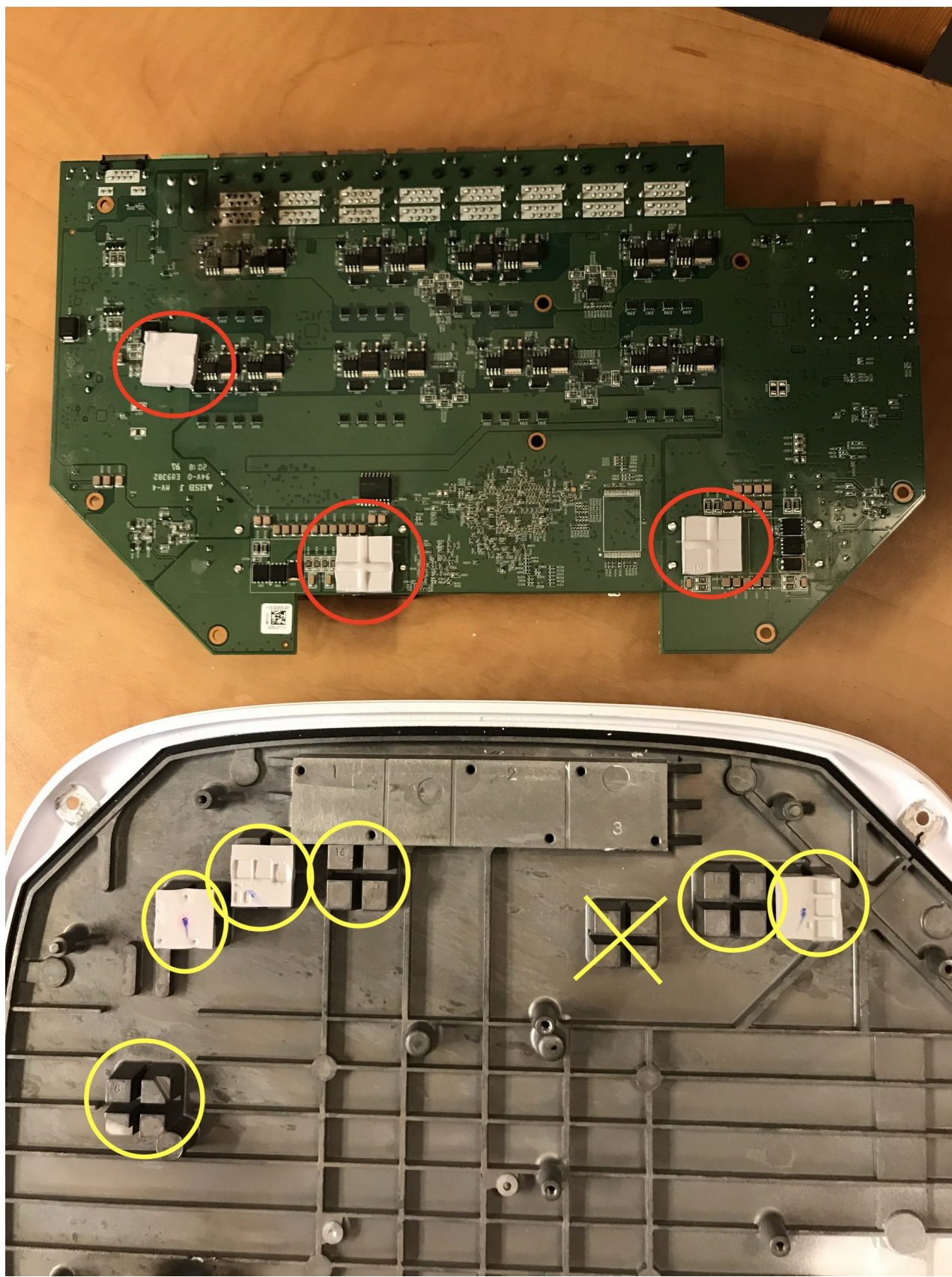
Remove the 5 screws holding the board to th4 shell (red) and the 5 sprung screws holding down the heatsink (yellow)



wipe off the white heatsink paste from the CPU (red circle), chassis (red oval), and heatsink (yellow circle). Gently lift the board from the chassis. It will stick slightly from the thermal pads.

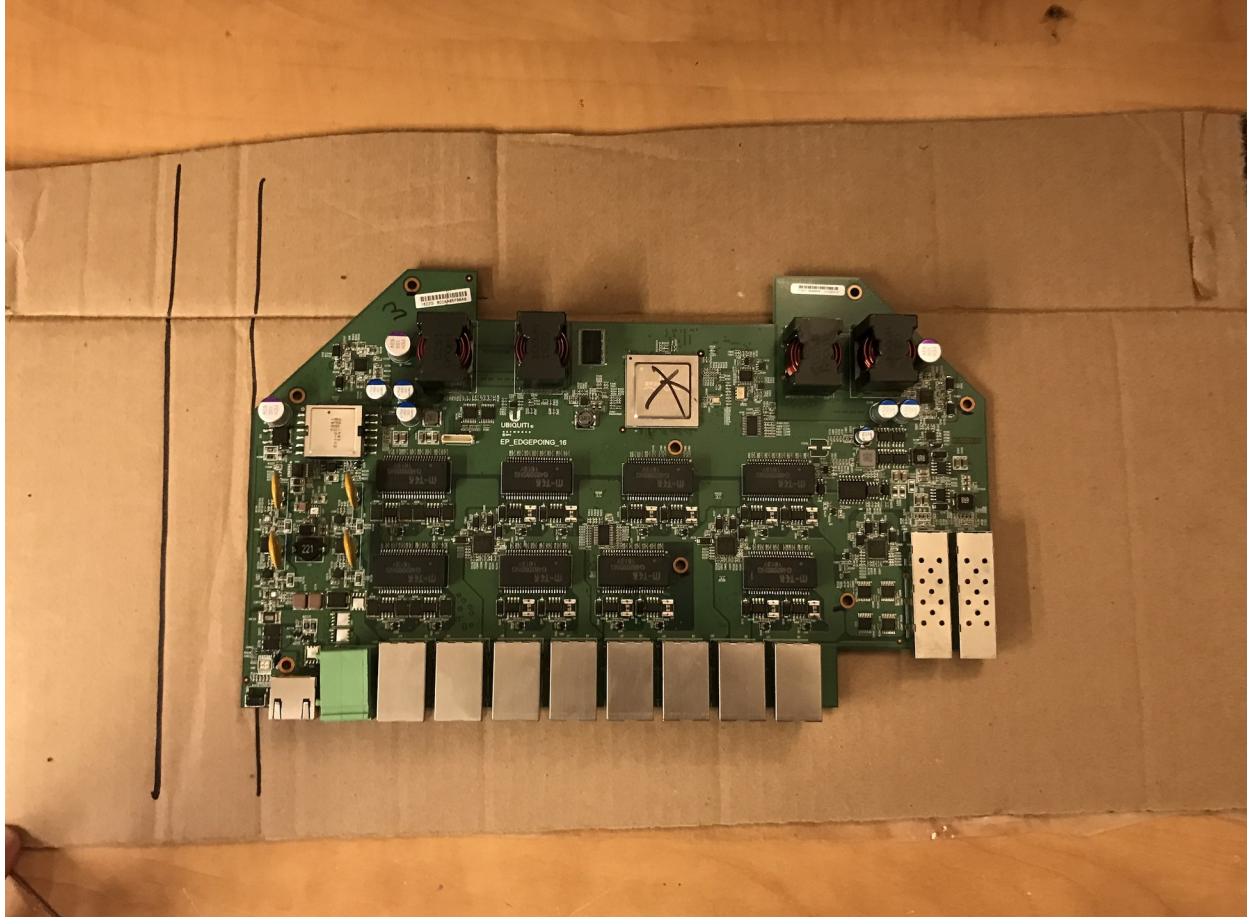


IMPORTANT: lift any thermal pads that were left on the board (red circles), and transfer them to their corresponding location on the chassis. Every chassis should have six thermal pads in the locations of the yellow circles. With a sharpie, mark the board and the chassis uniquely so the right board goes in the right shell when you get it back. Place all the loose parts in a plastic bag, put it in the shell, and tape the shell shut with painter's tape so you don't lose anything.

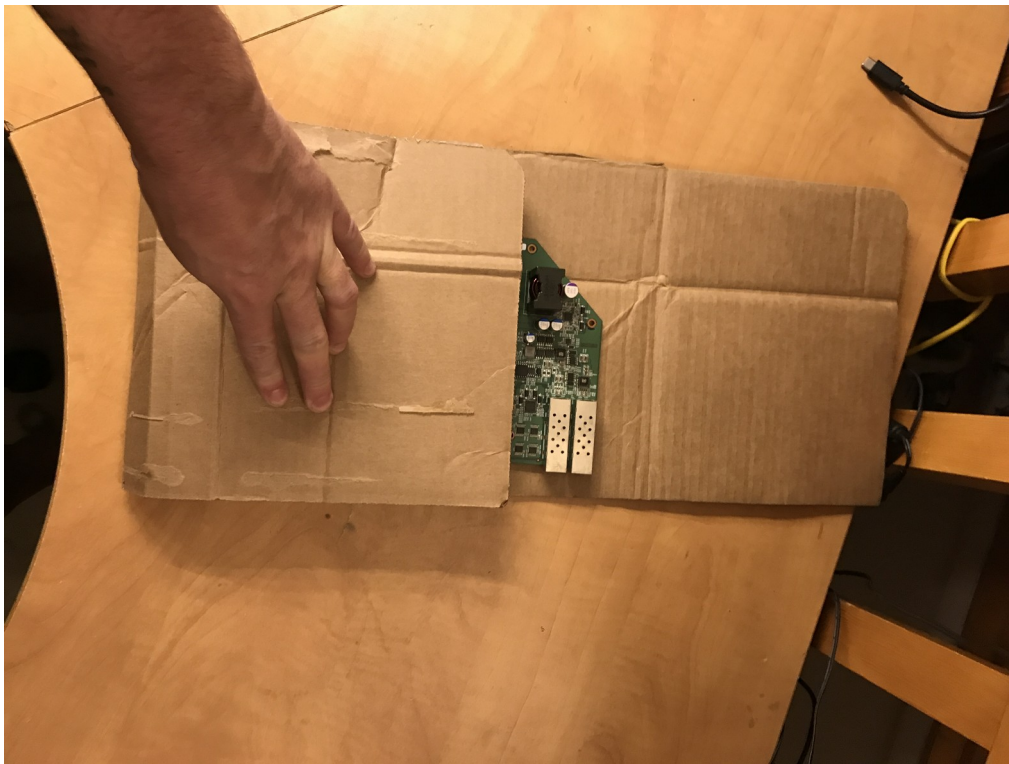


PACKAGING THE BOARD FOR TRANSPORT:

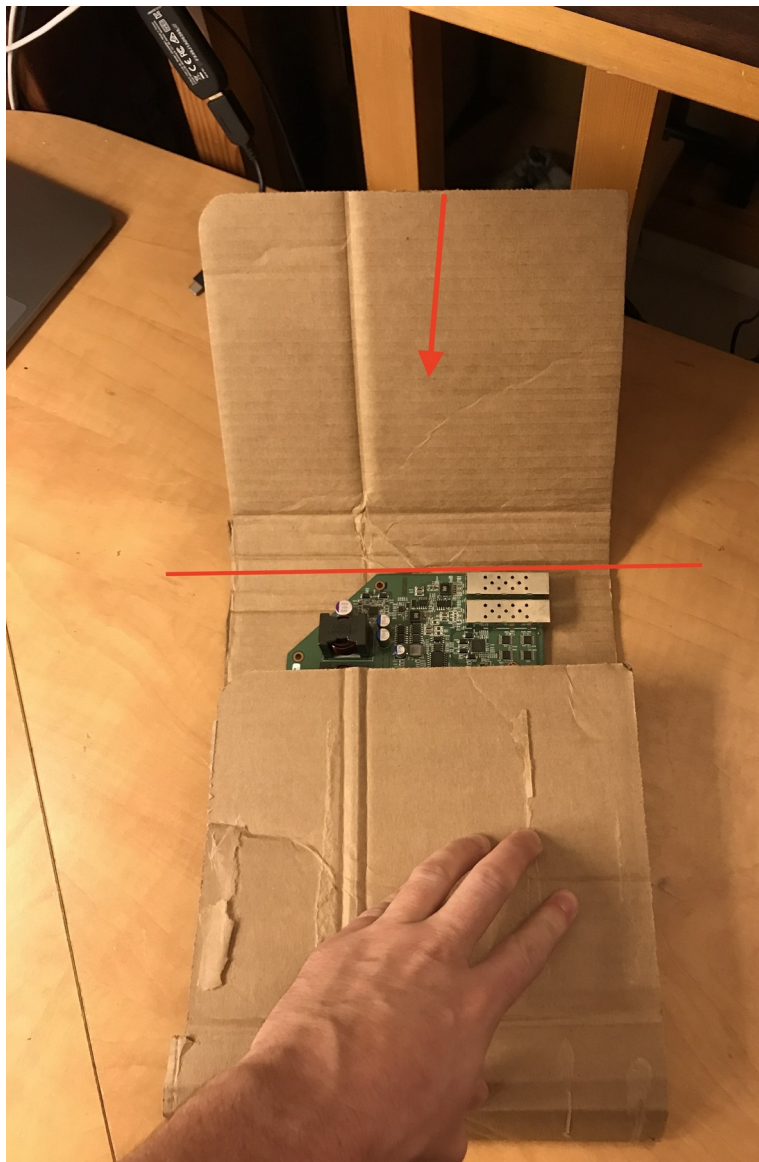
Cut a piece of cardboard that is twice as wide as the board, and a couple inches taller on each side of the board. Place the board in the middle, crease the cardboard along the left side of the board, and then a second crease 1.5", as marked in black sharpie in the picture below.



Fold it tightly over the left side of the board



holding that flap firmly, bent the cardboard tightly along the crease of the right side of the board, then tape the flap down tightly.



On the port side, fold in one side, then the other side, then tape down the centre, then tape down each side



pinch the other side in the middle, tape, then pinch in each side and tape as well. Finally, tape a full circle around the board in one direction, then another complete circle in the perpendicular direction, so

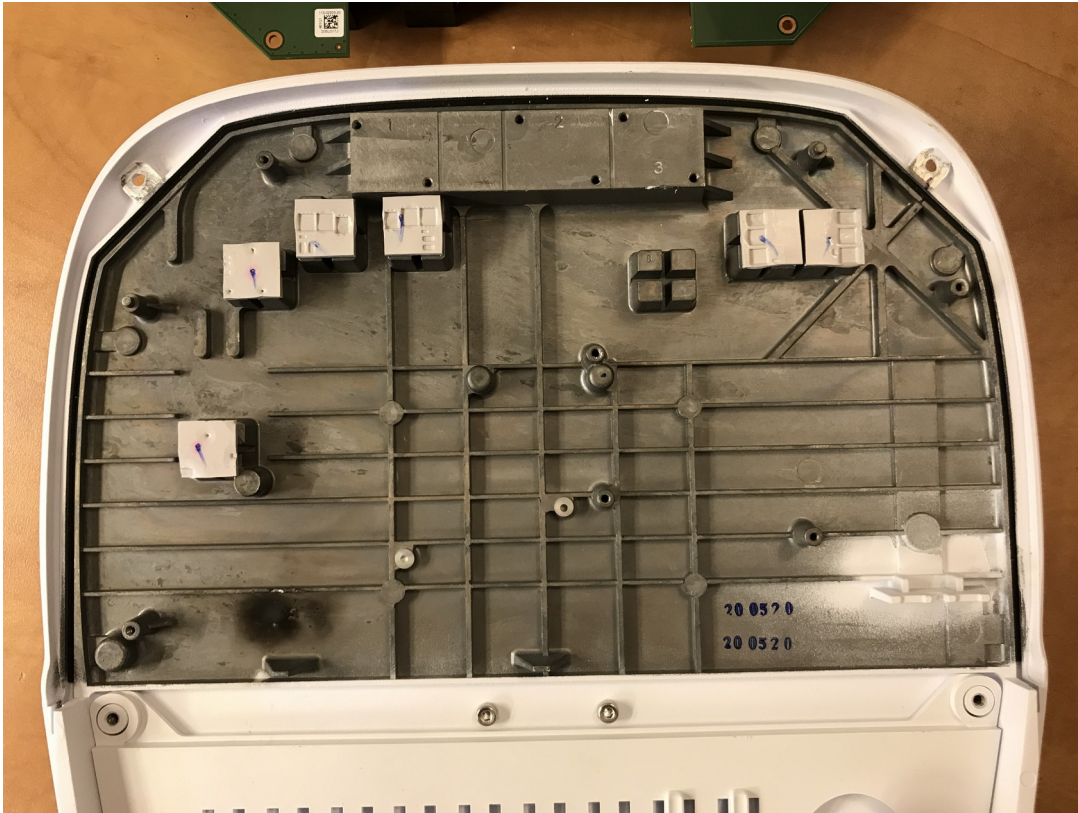


you have a cross of tape on both sides, like in the picture above. The board should now be tightly bound in the cardboard sleeve, not moving around within. If mailing only ONE board, simply slide this into a bubble mailer. If mailing multiple boards, line a box in bubble wrap, and fill it up with these cardboard sections.

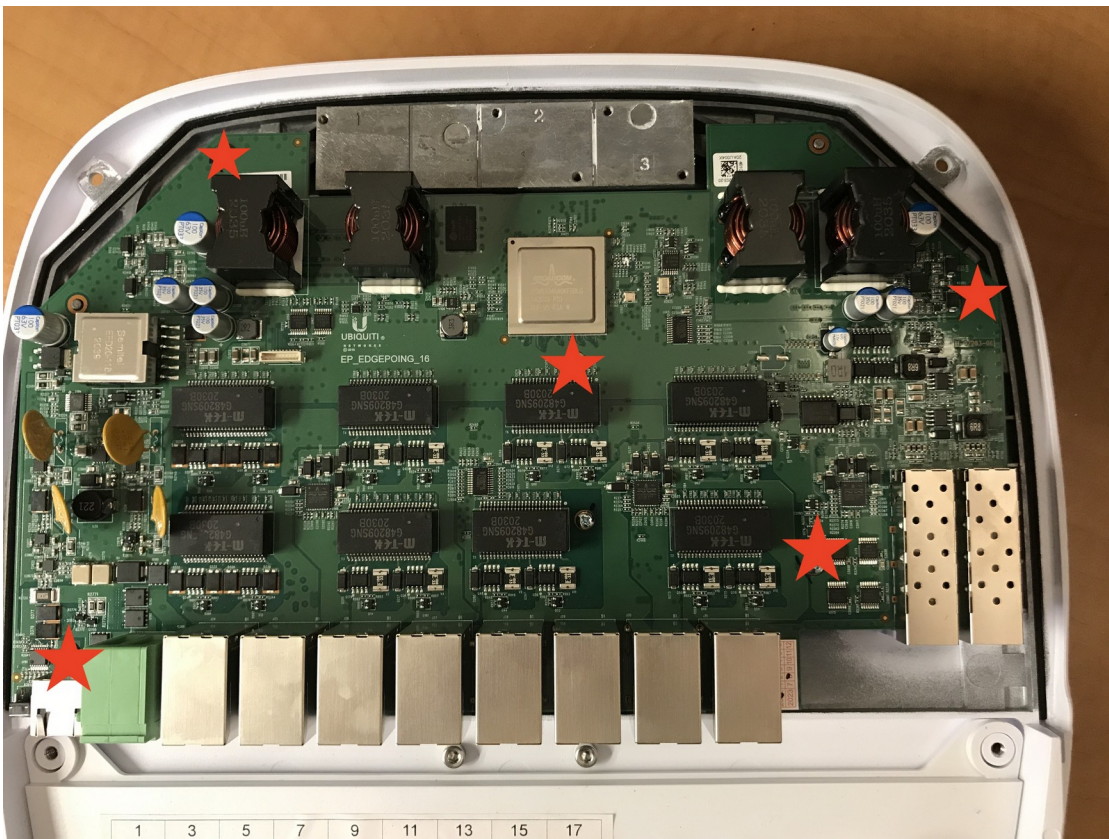


REASSEMBLY:

lay the bottom shell down, and make sure all 6 thermal pads are in their proper place.



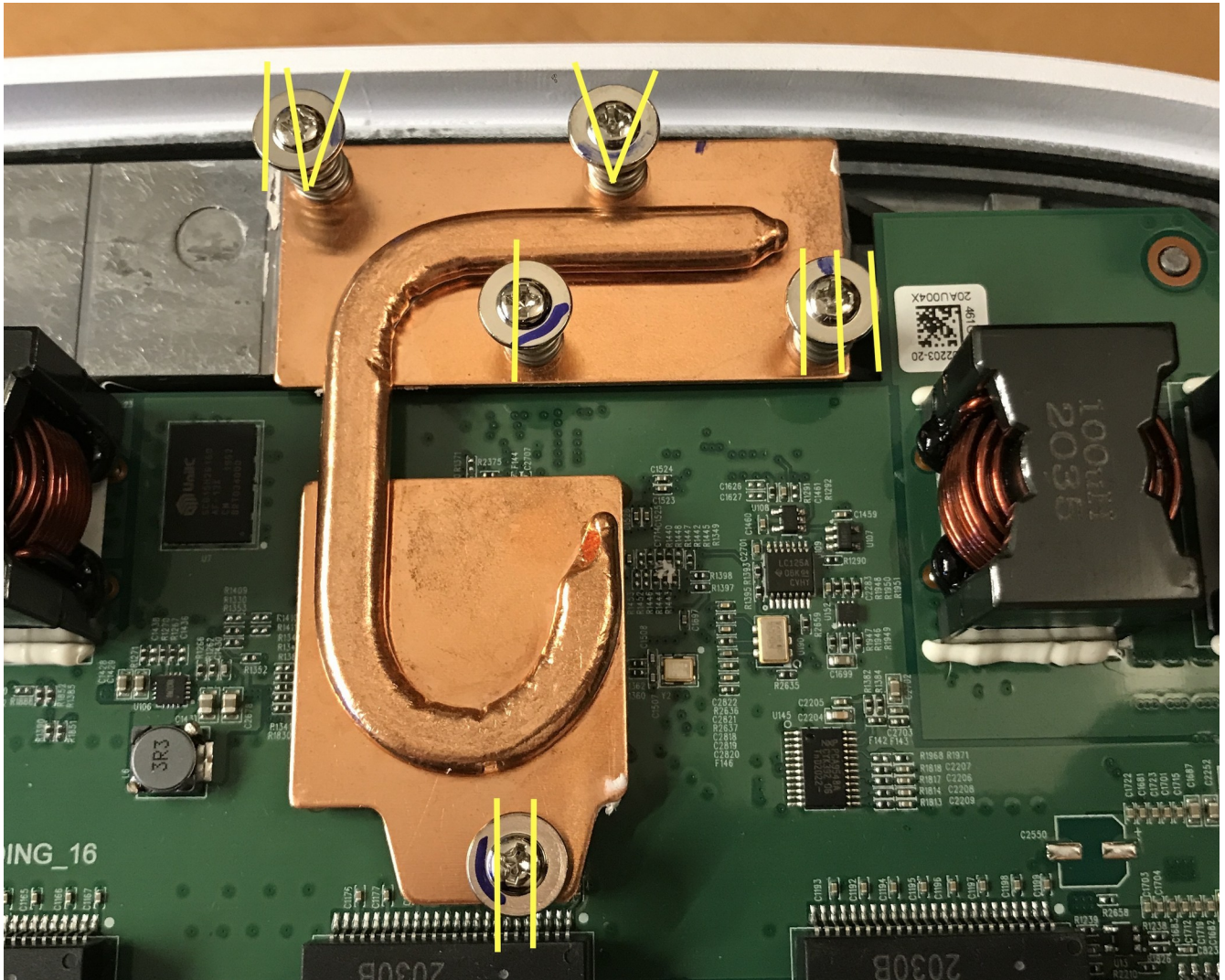
Lay the board down, and screw in the 5 screws in the locations marked with red stars



Apply one packet of thermal paste to CPU in an X, and apply second packet of thermal paste to casing in a thick line.



Place heatsink on CPU/case, and press it down firmly, aligning the holes with the screw holes. Install the spring screws in order labeled below.



Place cover at 45 degree angle



holding cover open, carefully insert the LED cable connector



replace these two bevel head screws



finally replace the two large screws on the rear

